



4 YEAR OLD PRESCHOOL

Here's The Scoop!



Week of Jan. 18th 2021

CURRICULUM

Alphabet Box: No Alphabet Box this week. We will review letters A - L.

Reading: We will continue unit 4 of our reading curriculum with the tale *The Elves and the Shoemaker*.

Religion: In our Religion unit this week we will learn that *God Made Food*. The children will express gratitude for the food God gives us.

Second Step: We will continue learning how to identify happy and sad feelings. We will learn how to look at people's faces and bodies for clues to help us identify how they feel.

Reminder to Parents

PRESCHOOL & KINDERGARTEN VIRTUAL INFO NIGHT (VIA ZOOM)

Please attend our Virtual Info Night on **Wednesday 1/27** via zoom from **6:30PM - 7:30PM**. You will have the opportunity to learn about our Kindergarten program for next year. If you have family or friends who are interested in attending St. Luke for Preschool or Kindergarten, please let them know about our Info Night. We have a referral program if someone new enrolls at St. Luke. Please RSVP here:

<https://events.r20.constantcontact.com/register/eventReg?oei=dk=a07ehhu9etwbd129cc3&oseq=&c=&ch=>

NO SCHOOL - MARTIN LUTHER KING DAY

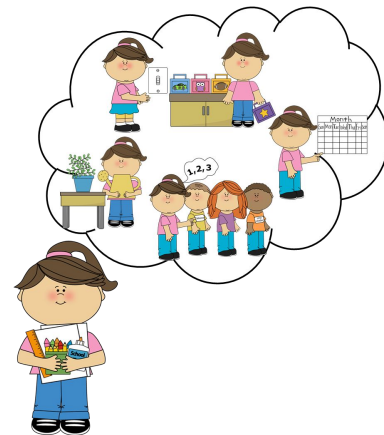
There is no school on **Monday 1/18**. We have been learning about Martin Luther King all week, please take this time to reflect with your children on what they learned in class.

SCHOLASTIC BOOK ORDER

January and February Scholastic Book Orders were sent home Friday 1/15. Please make your orders by **Wednesday 1/20**.

IB Corner

IB ATTRIBUTE FOR JANUARY: PRINCIPLED



We do the right things.

We will continue our new IB unit this week!

CENTRAL IDEA

Behavior and communication are expressed in different forms.

QUESTIONS THAT WILL GUIDE OUR INQUIRY:

1. What is an emotion?
2. What are our different emotions that people have?
3. How do your body and face show your emotion?
4. How can you affect others' emotions and how are your emotions affected?
5. How do you know you are making good choices with your actions?

Contact Info:

Mrs. Lutovsky: clutovsky@stlukeshoreline.org

Miss. Anneliese: asmyth@stlukeshoreline.org

St. Luke Phone #: (206) 542-1133