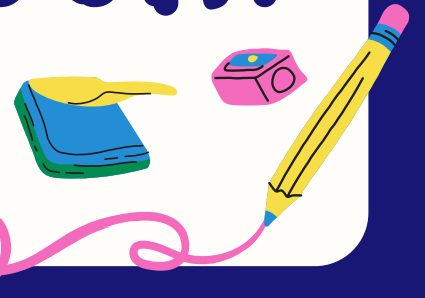


# Classroom News



## Upcoming Events

MLK Holiday 1/16  
MAP Testing 1/23-1/25  
Mid-Trimester Report 1/27  
Catholic Schools Week 1/29

## Reminders

No School as an observance of Martin Luther King Jr. Holiday  
Monday, January 16th

## IB Attribute of the Month

- Principled - means being someone who will "act with integrity and honesty, with a strong sense of fairness and justice, and with respect for the dignity and rights of people everywhere.

## This week in Grade 4

This week in 4th grade, we focused on the chain reaction of God's Love through us to others in religion class. Students inquired about different types of energy, and how energy is stored and released. Students completed a mini project to demonstrate energy storage and transfer. In Math, students focused on multi-digit multiplication using an area map. During Reading, students read an article about interesting facts and responded and reflected through Toddle. Students began to inquire into African culture and art during art class.

This coming week in Math we will review unit 6 on Monday and plan to take the Unit 6 test on Tuesday.

Our IB unit of inquiry is that Energy can be converted from one form to another. Based on our school-wide theme, we will focus on being principled during this unit. We began to explore what energy is and how it can transfer and transform into other objects. Students learned about a Rube Goldberg Machine and created an amusement park ride that spun in a circle via a thick or thin rubber band. Students experimented with the different rubber bands to determine which would spin longer and faster, and determine why.

In ELA, students will have a spelling list/test this week. We will read *How Energy transfers and Transforms* and complete a response and reflection assignment. During writing, we will work on our drafts and create introductions and conclusions in our opinion essays. In grammar this week we will be learning about ordering adjectives.

# At Home Discussions

## Continuing the Learning in Math!

- Have your student explain an area model.
- Ask to complete an area map for the following equations.
  1.  $5 \times 26$
  2.  $14 \times 35$
  3.  $4 \times 47$

## Continuing the Learning in Art!

- What is culture?
- What types of ways do people in Africa express their culture?
- What types of ways do people in America express culture?
- What are the similarities between both?



## Continuing the Learning in Science!

- How does the height of an object change the energy transfer?
- What energy transfers do you use in your own life?

## Continuing the Learning in ELA!

- Ask students how they plan to save energy or reduce their impact on the Earth.
- In writing, ask students why the last reason of their essay should be the strongest reason.

## Continuing the Learning in Religion!

- How can you show love to your friends, family, and even people you do not know?
- What has been the most important experience in religion you have experienced?

